

WASTE MANAGEMENT:



- A lined waste bin with a fitting lid must be provided.
- A central waste storage area must be provided.
- Health care risk waste must be labelled and stored separately.

- Health care risk waste may only be removed by a registered service provider.
- Updated records of HCRW generated and removed must be kept.

TOBACCO ENFORCEMENT:



- Sign prohibiting smoking to be provided.
- A designated smoking area with an ashtray to be provided where applicable.



Overberg District Municipality
26 Long Street
Private Bag X22
BREDASDORP
7280
Telephone (028) 425 1157
Fax (028) 425 1014

**For more information contact
Local Environmental Health
Practitioner / Health Inspector**

CAPE AGULHAS:

Tel.: (028) 425 1157

OVERSTRAND:

Tel.: (028) 313 1243

THEEWATERSKLOOF:

Tel.: (028) 212 1121

SWELLENDAM:

Tel.: (028) 514 1182

[facebook.com/OverbergDM](https://www.facebook.com/OverbergDM)

[twitter: @OverbergDM](https://twitter.com/OverbergDM)



REQUIREMENTS FOR BEAUTY SALONS



BEAUTY SALONS



As per the Overberg District Municipality's Municipal Health Services By-Law dated 15 July 2019, beauty salons must comply the following standards:

ADMINISTRATION:



- Must have a permit authorizing the activity.
- Must have a Health Certificate (issued by EHP).
- Renewed annually by EHP.
- Must be zoned as a Hair salon (Zoning Certificate issued by local municipality).
- Application fees are indicated on application forms.

STRUCTURAL FACILITY:



- Internal walls must be easily cleanable and painted with a light colored paint.
- Floors must be easily cleanable and brought to a smooth finish.
- Ceiling must be dustproof.
- Premises must have adequate ventilation and illumination.
- Maintenance of the premises must be satisfactory.



WORKING SURFACES:

- Shelves, fixtures and table tops must be durable, non-absorbent and must be easily cleanable.



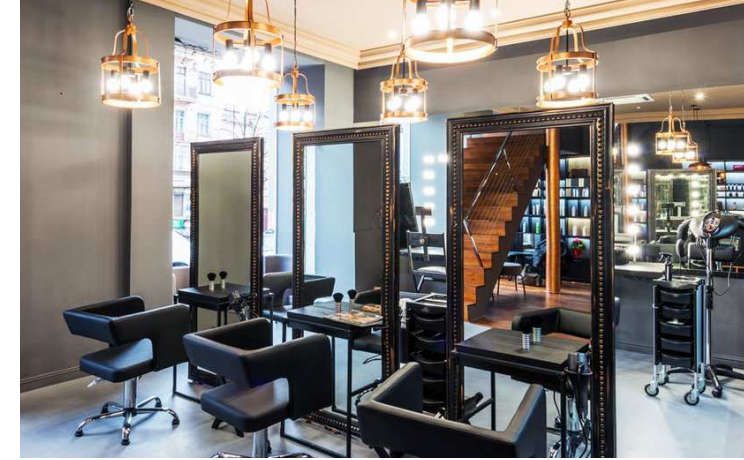
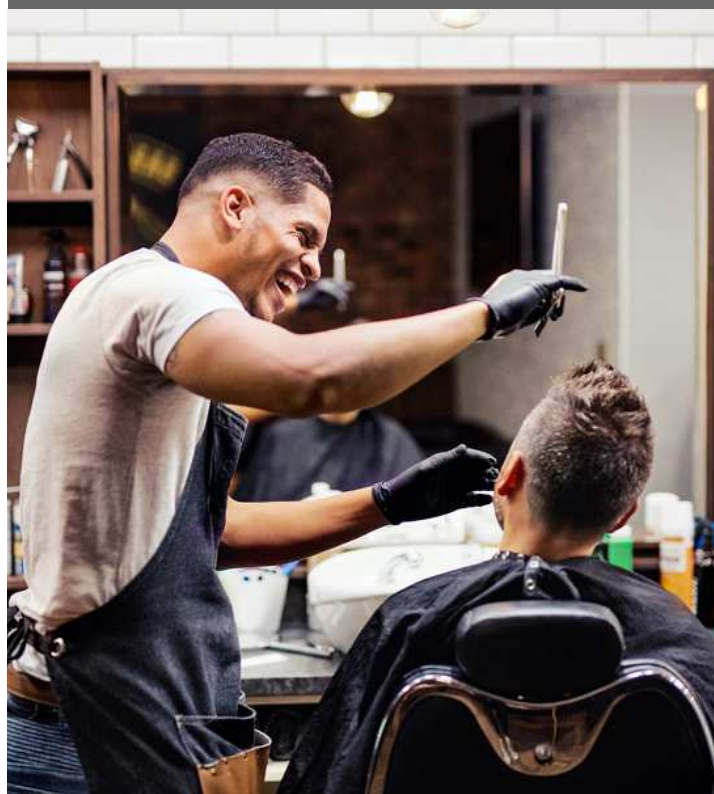
INSTRUMENTS AND EQUIPMENT:

- Must be adequately cleaned, disinfected and sterilized after each use.



PERSONAL PROTECTIVE EQUIPMENT:

- Water-proof apron must be provided.
- Gloves must be provided.
- Dusk masks must be provided.
- An adequate number of towels must be provided.
- Provided PPE and towels must be washed regularly



SANITATION FACILITIES:

- At least 1 toilet should be provided for every 12 employees and a hand wash basin.
- At least 1 toilet should be provided for every 20 clients and a hand wash basin.
- Toilets should be designated by gender.
- Toilets must be equipped with running water and flush.
- Adequate wash up facilities with both hot and cold water supply for washing of hair.
- An approved system for waste water disposal should be in place.
- Soap, toilet paper and disposable towels should be provided.



VECTOR CONTROL:

- Vector control measures must be in place.
- No animals must be allowed on the premises.



EMERGENCY EQUIPMENT:

- Serviced fire extinguisher must be provided.
- First aid kit with complete contents must be provided.